



Primrose Close

Bourne, PE10 0PG

Extremely well presented three-bedroom detached house in the heart of Morton village, recently upgraded with a new kitchen, bathroom, and first floor carpets. Spacious lounge/diner, enclosed low maintenance garden, and off street parking for one car.

£950 PCM

Primrose Close

Bourne, PE10 0PG



- Three-bedroom modern detached home in Morton village
- New carpets throughout upstairs rooms
- Low-maintenance rear garden with patio and gravel areas
- Brand-new fitted kitchen with oven, hob, and extractor
- Spacious L-shaped lounge/diner with patio doors to garden
- Off-Street Parking for 1 Vehicle
- New contemporary bathroom with full-height tiling and shower over bath
- Redecorated in neutral tones
- Convenient location close to shops, schools, and transport links
- Please see attached Key Facts for Tenants with Material Information Disclosures

Entry Area

Living / Dining Room

17'3 x 17'3 (5.26m x 5.26m)

Kitchen

8'1 x 8'5 (2.46m x 2.57m)

First Floor Landing

Bedroom 1

11'0 x 8'1 (3.35m x 2.46m)

Bedroom 2

10'10 x 5.11 (3.30m x 1.52m.3.35m)

Bedroom 3

10'6 x 5'9 (3.20m x 1.75m)

Bathroom

6'4 x 6'2 (1.93m x 1.88m)

Low Maintenance Rear Garden -

Patio and Gravelled

Off Street Parking - 1 Vehicle

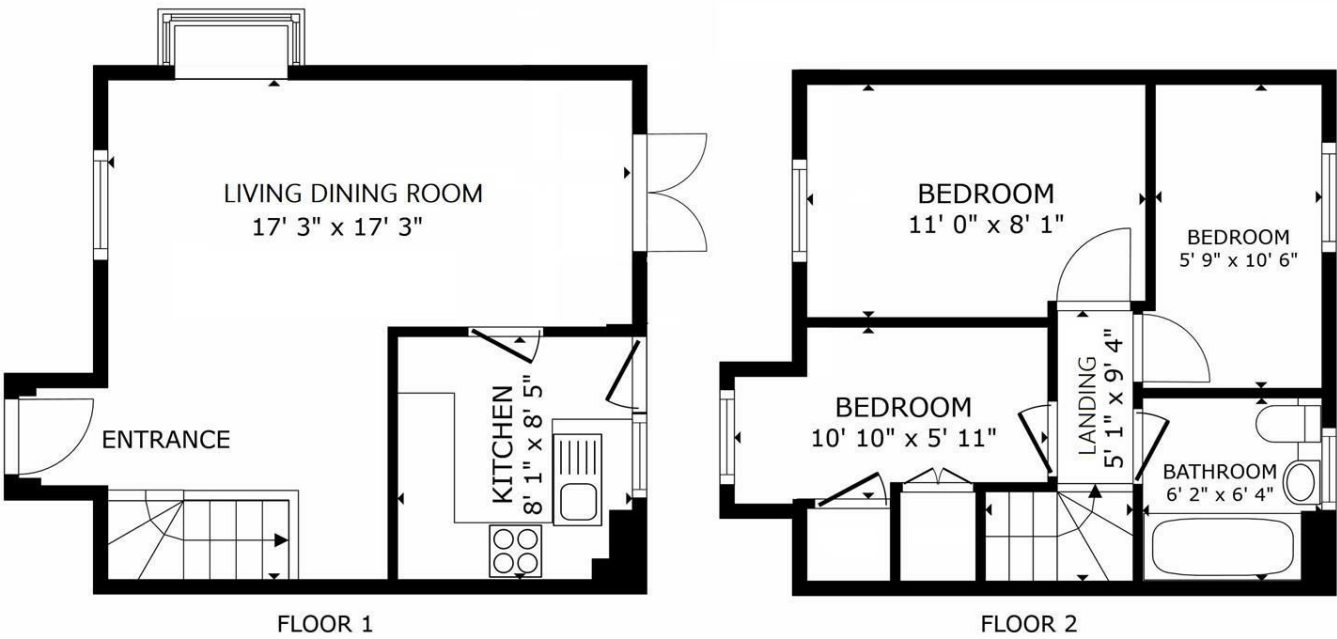


Directions

Please use post code PE9 2GF for Sat-Nav assistance



Floor Plan



GROSS INTERNAL AREA
FLOOR 1 323 sq.ft. FLOOR 2 310 sq.ft.
TOTAL : 633 sq.ft.
SIZES AND DIMENSIONS ARE APPROXIMATE, ACTUAL MAY VARY.

These particulars, whilst believed to be accurate are set out as a general outline only for guidance and do not constitute any part of an offer or contract. Intending purchasers should not rely on them as statements of representation of fact, but must satisfy themselves by inspection or otherwise as to their accuracy. No person in this firms employment has the authority to make or give any representation or warranty in respect of the property.

2-3 St Johns Street, Stamford, Lincs, PE9 2DA
Tel: 01780 750000 Email: info@goodwinproperty.co.uk goodwinproperty.co.uk

